

FLEXIBLE LED STRIP

HIGHLIGHT FEATURE:

- Flexible and cuttable LED strip
- View angle 120 degree
- High lumen output and efficacy
- High Color rendering >90 or >95
- Easy installation with self-adhesive tape on backside
- DC 24V working voltage
- Color consistency up to 3 SDCM**
- Embedded constant current regulation
- Ingress protection IP20 , IP44 or IP67 rating

**Color consistency up to 3 SDCM is base on same production batch.



APPLICATION

- Cove lighting
- Ceiling Integration
- Signage, advertising and lettering
- Suitable for indoor or semi-outdoor use

CRI 90 or CRI 95 SMD2835, SMD3528 Flexible LED Strip



Model:	FL-SMD2835-XXW-CCT-CRI-IP	
Input:	24VDC	24VDC
Power:	14.4W/meter	19.2W/meter
LED Qty	60pcs/m	120pcs/m
CRI	>90 or >95	
CCT	2700K, 3000K, 4000K, 6000K	
Lumen per meter (lm/m)	950-1100 lm/m (depends on CCT)	1500-1800 lm/m (depends on CCT)
Unit cutting length	Ask in detail	Ask in detail
Waterproof grade	IP20, IP44 or IP67	
Bending	Horizontal bend	
PCB width	10mm	
Roll:	5 meter	

	CRI>90		CRI>95		
Model:	FL-SMD3528-XXW-CCT-90-IP		FL-SMD3528-XXW-CCT-95-IP		
Input:	24VDC	24VDC	24VDC	24VDV	24VDC
Power:	4.8W/meter	9.6W/meter	7.2W/meter	9.4W/meter	14.4W/meter
LED Qty	60pcs/m	120pcs/m	60pcs/meter	78pcs/meter	120pcs/meter
CRI	>90		>95		
CCT	2700K, 3000K, 4000K, 6000K		2700K, 3000K, 4000K, 6000K		
Lumen per meter (lm/m)	400-480 lm/m (depends on CCT)	800-960 lm/m (depends on CCT)	450-600 lm/m (depends on CCT)	650-800 lm/m (depends on CCT)	900-1200 lm/m (depends on CCT)
Unit cutting length	Ask in detail	Ask in detail	Ask in detail	Ask in detail	Ask in detail
Waterproof grade	IP20, IP44 or IP67		IP20, IP44 or IP67		
Bending	Horizontal bend		Horizontal bend		
PCB width	8mm		8mm		
Roll:	5 meter		5 meter		

****RGBW, Tunable white version is available****

****Single colour version is available****

****The specification is subject to change without note.****

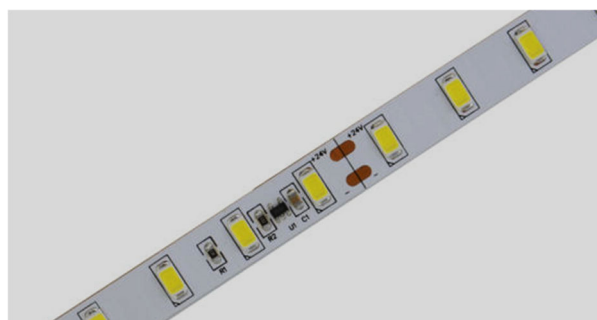
CRI 90 or CRI 95 SMD 5630 Flexible LED Strip (Constant current type)

HIGHLIGHT FEATURE:

- Embedded constant current regulation
- Consistency brightness in each LED
- Wide input voltage range 21-30Vdc



Build in Constant current regulation IC



Model:	FL-SMD5630-XXW-CCT-CRI-IP	
Input:	Normal 24VDC	Normal 24VDC
Power:	15W/meter	22W/meter
LED Qty	70pcs/m	126pcs/m
CRI	>90 or >95	
CCT	2700K, 3000K, 4000K, 6000K	
Lumen per meter (lm/m)	1400-1750 lm/m (depends on CCT)	2200-2500 lm/m (depends on CCT)
Unit cutting length	Ask in detail	Ask in detail
Waterproof grade	IP20, IP44 or IP67	
Bending	Horizontal bend	
PCB width	10mm	12mm
Roll:	5 meter	

****RGBW, Tunable white version is available****

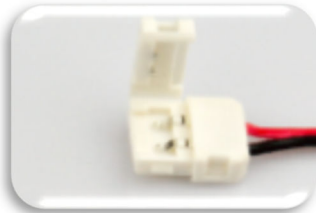
****Single colour version is available****

****The specification is subject to change without note.****

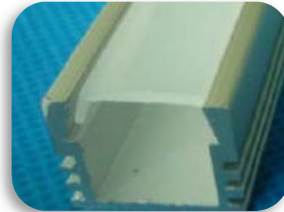
FLEXIBLE LED STRIP ACCESSORIES



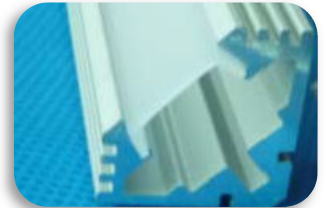
Connector



Connector with cable



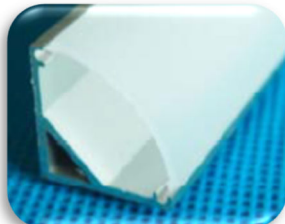
Aluminium Profile



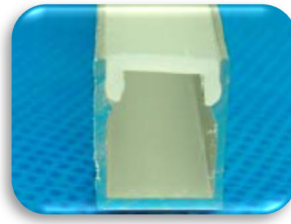
Aluminium Profile



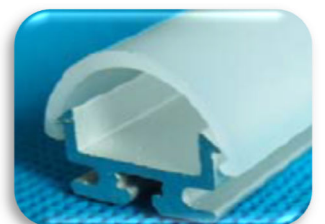
Aluminium Profile



Aluminium Profile



Aluminium Profile



Aluminium Profile

****RGBW, Tunable white version is available****

****Other shape of aluminium profile per request, please ask sale in detail****

****The specification is subject to change without note.****

PRODUCT OUTLOOK

TO CUSTOMER

BESPOKE SOLUTION FROM LITESYN

- We can provide different CCT with single BIN.
- Pre-cut and pre-assembly services to save the installation period.
- We can offer different power rating to comply the power density regulation.
- Provide full set flexible LED Strip solution with LED power supply, dimming system and Aluminium profile.